

MARDI Gras



Pot O'Gold Sponsorships Benefits

All sponsorships include promotion of your business or family name on the print and digital platforms used to promote this event. You can fill out this form and turn it in with a check to the school office or complete the process online. Any graphics for your business/name must be emailed to Lisa Griffith at LGriffith@hfcsfw.org by **January 26, 2024**.

- _____ The **Platinum** Level: \$5,000
- One table, 8 seats with 8 meals and beverages including beer and wine
 - Logo on program cover
 - Logo in church bulletin announcement
 - One full page program ad
 - Name/business name featured on the front of the event invitation
 - Three yard signs-two along the car line and one by the church
 - Three slides in the event slide show
 - Ad on HFCS social media accounts
 - Website link on school website

- _____ The **Silver** Level: \$1,500
- One table, 8 seats with 8 meals and beverages including beer and wine
 - One half-page program ad
 - Name/business name featured on the back of the event invitation
 - One yard sign along the car line
 - One slide in the event slide show
 - Ad on HFCS social media accounts

- _____ The **Gold** Level: \$3,000
- One table, 8 seats with 8 meals and beverages including beer and wine
 - One full page program ad
 - Name/business name featured on the back of the event invitation
 - Two yard signs-one along the car line and one by the church
 - One slide in the event slide show
 - Ad on HFCS social media accounts
 - Website link on school website

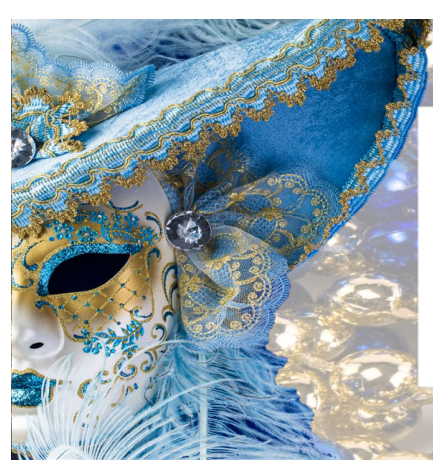
- _____ The **Bronze** Level: \$500
- 4 POG event tickets, meals and beverages including beer and wine
 - Listed on "Thank You Donors" page in the program
 - One slide in the event slide show
 - Ad on HFCS social media accounts



Please indicate your preferred sponsorship level or fill out the form online.

Business Name: _____ Business Contact: _____
 Address: _____ City: _____ State: _____ Zip: _____
 Phone: _____ Email: _____ Date: _____

Holy Family Catholic School is a 501(C)3 (Tax ID 75-1910643) nonprofit organization and to the extent allowed by law donors are entitled to a charitable deduction. All donors should consult with their tax advisor or the IRS to determine whether a contribution is deductible. No goods or services were provided to you by our school, in whole or part, in exchange for consideration for your gift.



MARDI *Gras*

